

NOT PRESENT ON  
OMC OR VOLVO

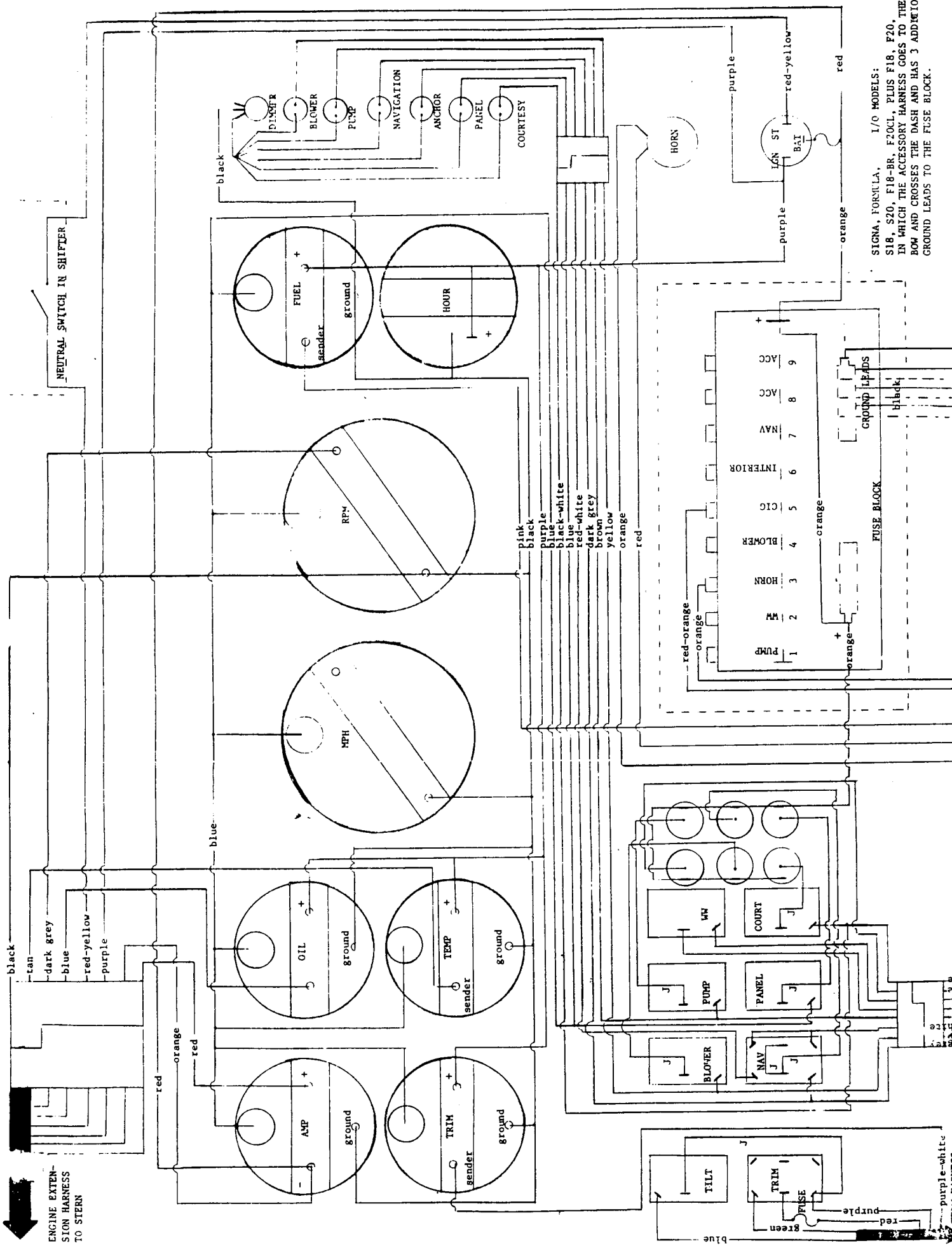
BOAT WIRING LAYOUT

- MODELS:  
S18 I/O  
S20 I/O  
F18 BR I/O  
F20 CL I/O

SINGLE MERCURY, OMC,  
VOLVO ENGINE  
- + S REFERS TO WIPER  
CONNECTIONS.

BLOWER 1BL

FUEL FILL GROUND  
black



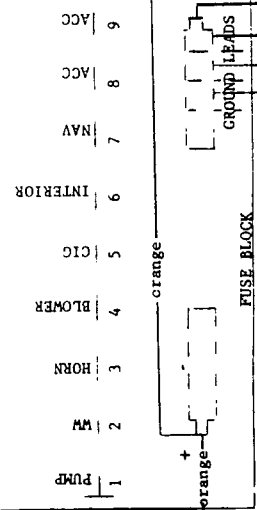
SIGNA, FORMULA, I/O MODELS:  
 S18, S20, F18-BR, F20CL, PLUS F18, F20,  
 IN WHICH THE ACCESSORY HARNESS GOES TO THE  
 BOW AND CROSSES THE DASH AND HAS 3 ADDITIONAL  
 GROUND LEADS TO THE FUSE BLOCK.

NEUTRAL SWITCH IN SHIFTER

ENGINE EXTENSION HARNESS TO STERN

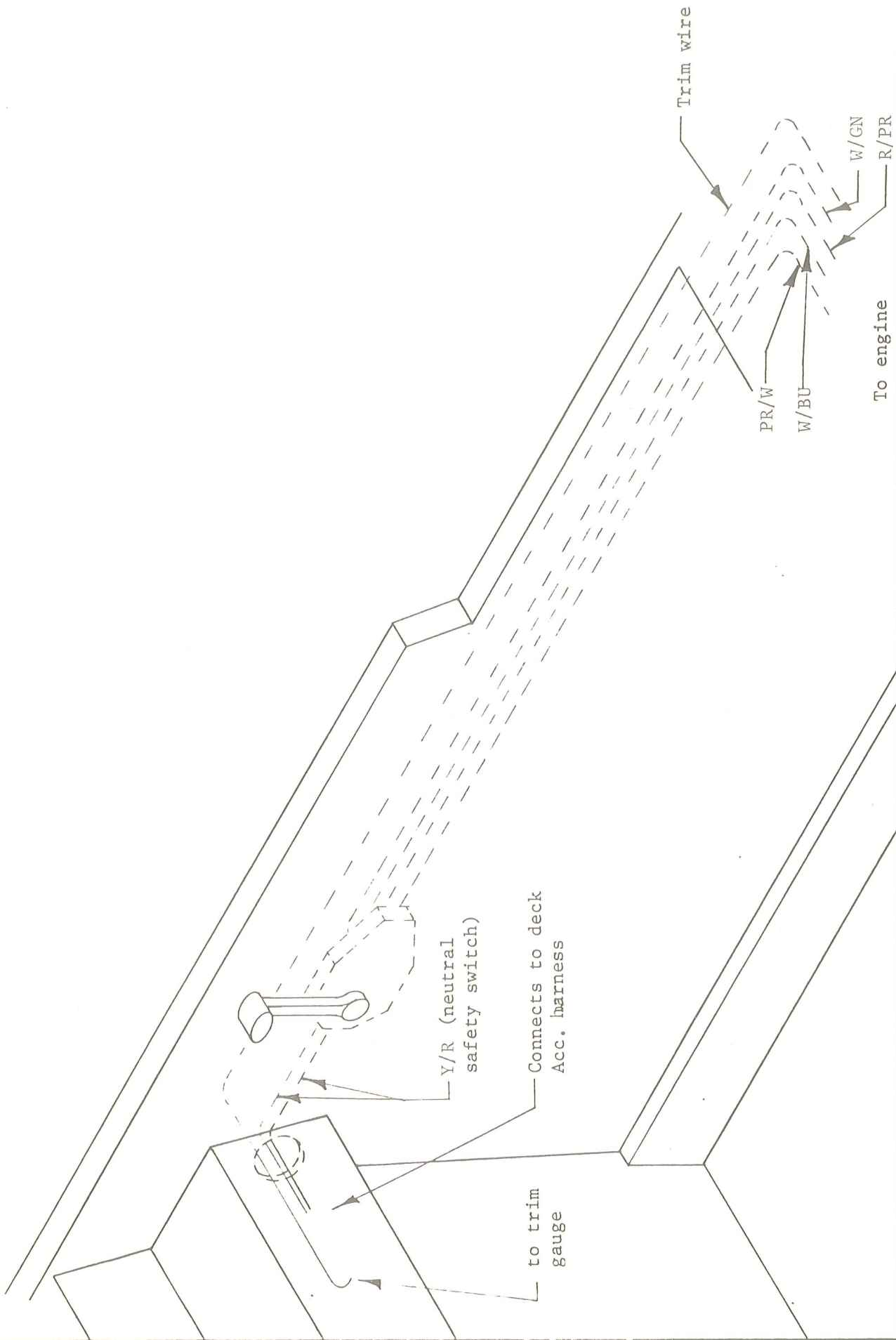
- black
- tan
- dark grey
- blue
- red-yellow
- purple

- pink
- black
- purple
- blue
- black-white
- blue
- red-white
- dark grey
- brown
- yellow
- orange
- red



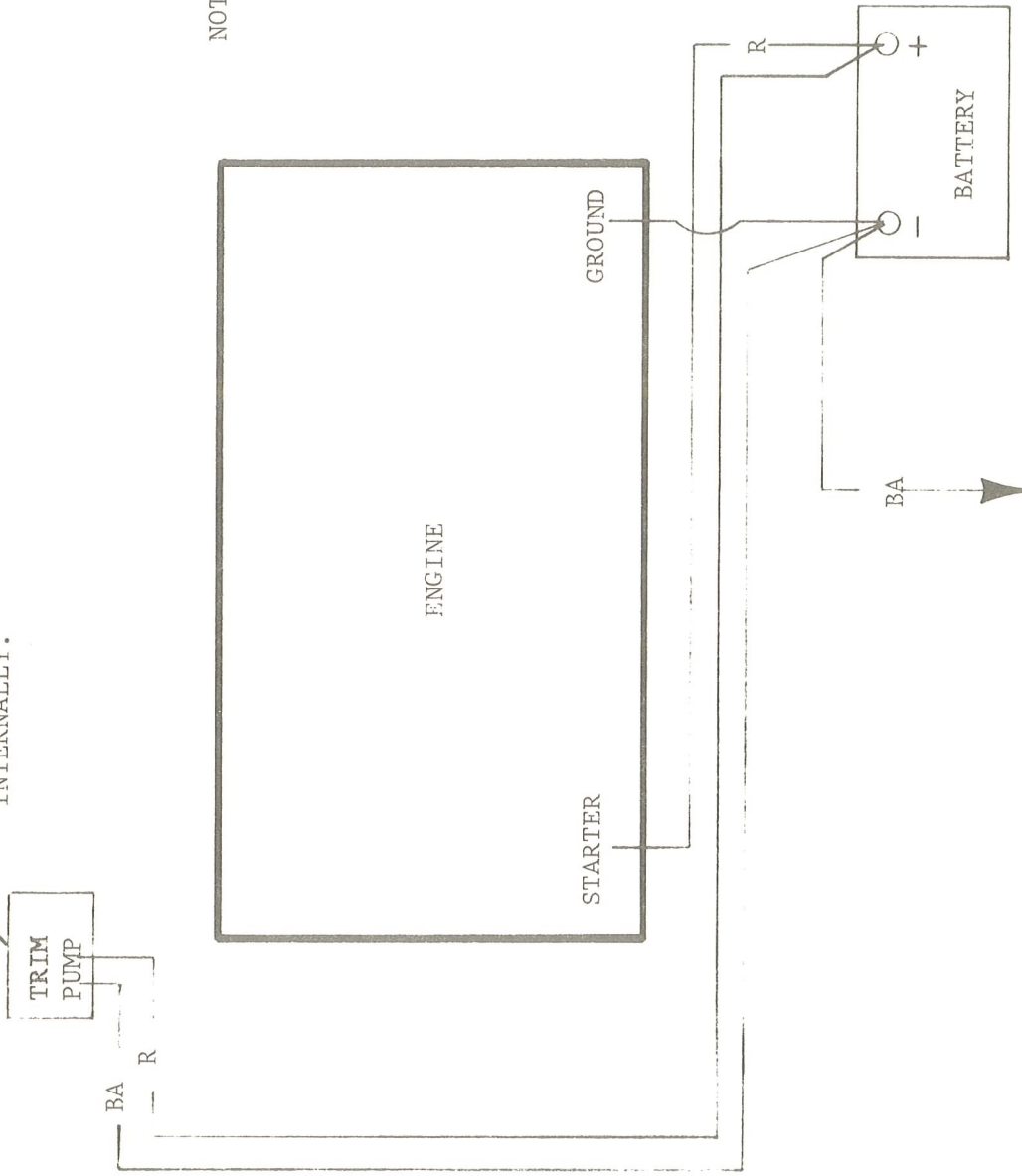
purple-white  
 red  
 green

Also see literature provided by Mercruiser



<b>THUNDERBIRD PROD.</b> P.O. BOX 501 DECATUR, IN 46733	<b>TITLE</b> Trim & Tilt in handle (Merc) THUNDERBIRD PART NO.		<b>DR BY</b> NWL	<b>SCALE</b> none	<b>TOLER</b>	<b>DRW</b> T-2
	<b>CK BY</b> JJJ		<b>DATE</b> 6/13/83	<b>REVISIONS</b> 6/20/84 NWL	<b>MATERIALS</b>	

DISREGARD FOR OMC  
TRIM PUMP IS ON  
ENGINE AND WIRED  
INTERNALLY.



NOTE: BATTERY  
PLACEMENT (PORT  
OR STARBOARD) MAY  
VARY DEPENDING ON  
MODEL.

TO DECK  
ACC. HARNESS

THUNDERBIRD PROD. P.O. BOX 501 DECATUR, IN 46733	TITLE BATTERY WIRING DIAGRAM THUNDERBIRD PART NO.	DR BY	SCALE	TOLER	DRW
		NWL			B-1
		CK BY	DATE	REVISIONS	MATERIALS
		JJL	7/12/83		