

NOT PRESENT ON
OMC OR VOLVO

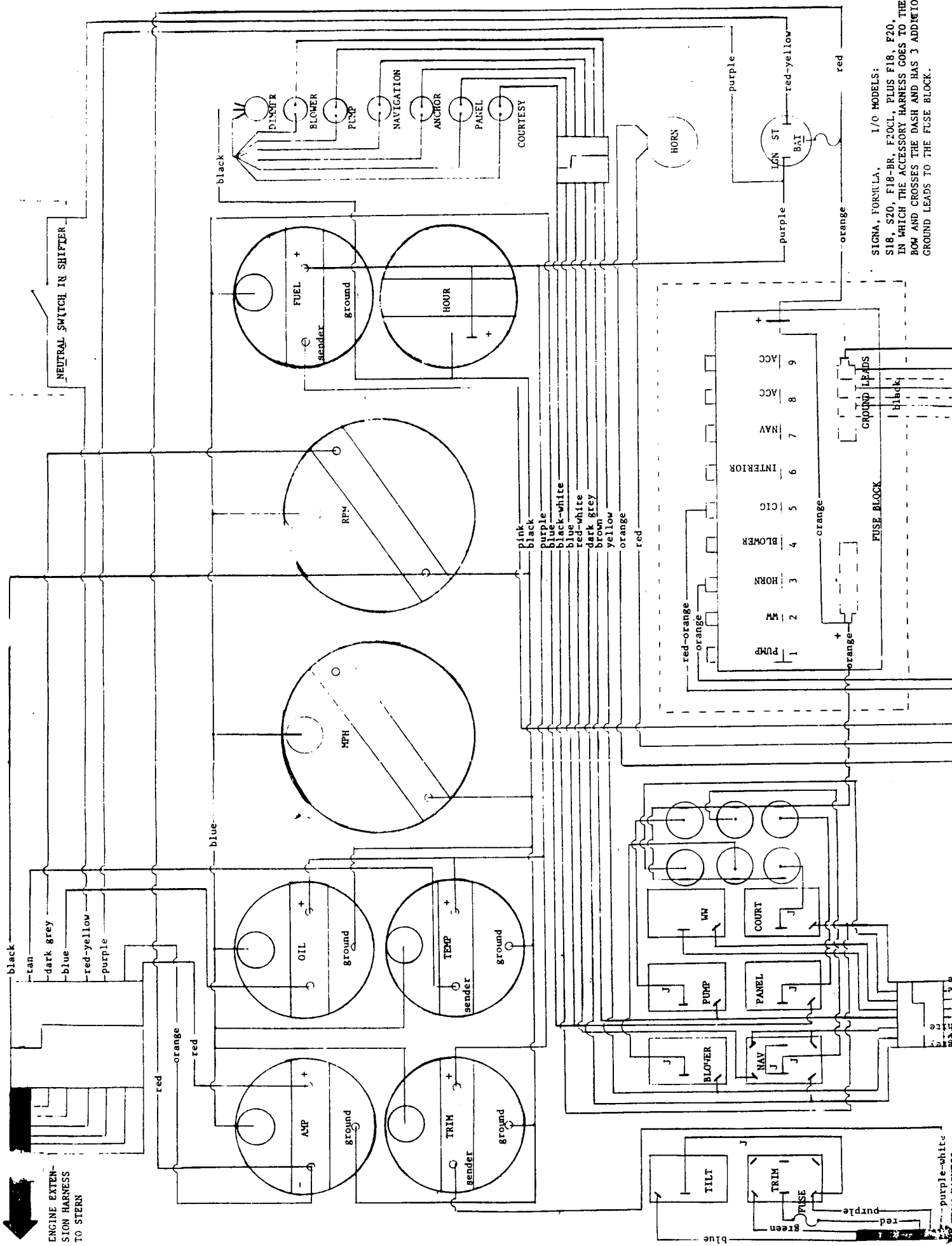
BOAT WIRING LAYOUT

- MODELS:
S18 I/O
S20 I/O
F18 BR I/O
F20 CL I/O

SINGLE MERCURY, OMC,
VOLVO ENGINE
- + S REFERS TO WIPER
CONNECTIONS.

BLOWER 1BL

FUEL FILL GROUND
black



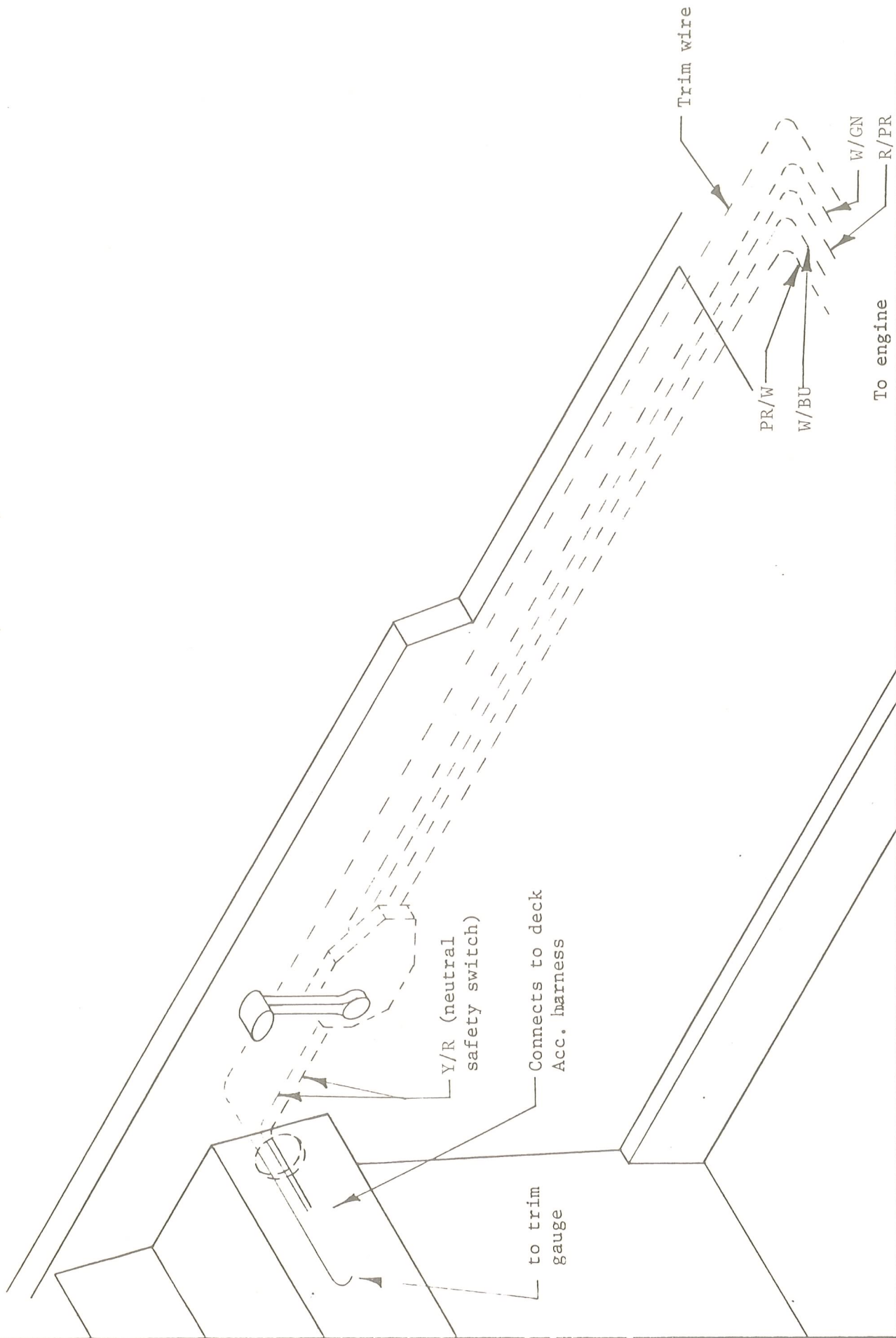
NEUTRAL SWITCH IN SHIFTER

ENGINE EXTENSION HARNESS TO STERN

SIGNA, FORMULA, I/O MODELS: S18, S20, F18-BR, F20CL, PLUS F18, F20, IN WHICH THE ACCESSORY HARNESS GOES TO THE BOW AND CROSSES THE DASH AND HAS 3 ADDITIONAL GROUND LEADS TO THE FUSE BLOCK.

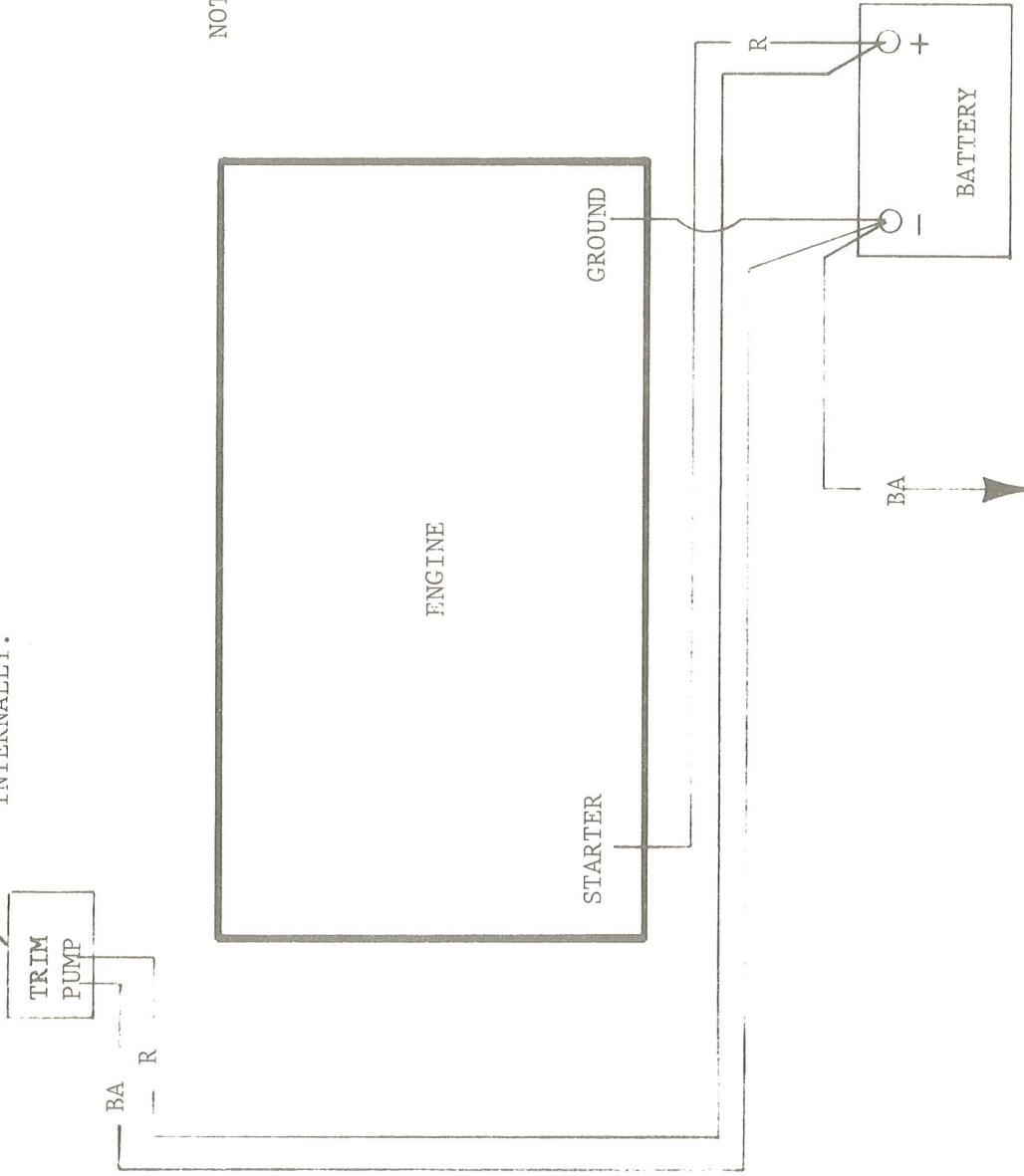
purple-white
red
green
purple

Also see literature provided by Mercruiser



THUNDERBIRD PROD. P.O. BOX 501 DECATUR, IN 46733	TITLE Trim & Tilt in handle (Merc)		DR BY NWL	SCALE none	TOLER	DRW T-2
	THUNDERBIRD PART NO.		CK BY JLL	DATE 6/13/83	REVISIONS 6/20/84 NWL	

DISREGARD FOR OMC
TRIM PUMP IS ON
ENGINE AND WIRED
INTERNALLY.



NOTE: BATTERY
PLACEMENT (PORT
OR STARBOARD) MAY
VARY DEPENDING ON
MODEL.

TO DECK
ACC. HARNESS

THUNDERBIRD PROD. P.O. BOX 501 DECATUR, IN 46733	TITLE BATTERY WIRING DIAGRAM THUNDERBIRD PART NO.	DR BY	SCALE	TOLER	DRW
		NWL			B-1
		CK BY	DATE	REVISIONS	MATERIALS
		JUL	7/12/83		