



FORMULA

2024

FORMULA BOATS
2200 WEST MONROE STREET • P.O. BOX 1003
DECATUR, IN 46733
1.800.736.7685 • FORMULABOATS.COM
Your Formula Dealer:



@formulaboats
@formulafishingteam

©Copyright 2024 by Porter, Inc.
Formula, Thunderbird and the Thunderbird logo are registered trademarks of Porter, Inc.
Formula reserves the right to make product changes and improvements throughout the model year.

CENTER CONSOLE

THE FORMULA LINEUP – Your Destination for Bold Adventures!

FORMULA FOR 2024 WILL BE YOUR OFFSHORE ADVENTURE DESTINATION! Now you can break free from convention and enjoy all that boating was meant to be. This evolutionary new direction is the logical succession to Formula's sought-after Crossover family. Built for the angler or the dayboater, these Center Console Fish and Center Console Sport models promise a new, top-quality, superbly-performing option for the center console world and will open new doors for established Formula boaters.

The all-new Formula 457 CCF and CCS impress with a length of 45'7" and a 13'9" beam. The 457s offer triple Mercury Verado 600 outboards to power you through any journey you take. And, boasting a base length of 38'7" and a 12' beam, the 387 CCF and CCS can be powered by twin Mercury Verado 600 outboards, triple Mercury 500s, triple Mercury Verado V10 350s or 400s or triple Mercury Verado V8 300s or 400Rs. Surefooted, solid and dependable, the FAS³Tech[®] hull will take you to far-flung, bold adventures with absolute confidence.

The possibilities are endless with Formula. Select your preferred options or design your ultimate, personalized dream boat with FormulaFlex™ to tailor graphics, upholstery and electronics to your liking. When you order your Formula you have the opportunity to work with our sales team and project engineer directly, or visit our headquarters for a truly immersive experience as you make your vision a reality. Enjoy receiving photos as your personalized dream boat advances through production, plus a complete set of photos at delivery. Want a more involved view? Arrange for a tour and personally observe your boat's progress – we would love to host you.

2024 adds Flagship and accent hullside colors of Atlantic Blue Metallic and high gloss non-metallic Neptune Blue, Sea Green, Dolphin Gray and Slate Gray. With FormulaFlex, colors are interchangeable, rewarding those with creative imagination and a perceptive eye. MyWay™ upgrades put you further in the designer's seat with the full range of Pantone® and automotive colors at your fingertips. Want your Formula to match your vehicle? Or your alma mater? Or the color of her eyes? You can with FormulaFlex MyWay.

Formula 2024 cockpits offer fresh new updates, bringing the best on-water experience to you and your crew. A sculpted, generous-width hardtop features a curved windshield that powers open, even while underway. Options abound, offering flexibility from all-out fishing features to sporty adventures. The CCF offers dual pressurized live wells and flip-down bench seat aft, port and starboard fish boxes with available freezer plates, and premium GEMLUX® outriggers. The 387 CCS features a double-wide ergonomic flip-down bench seat, while the 457 CCS boasts an expansive aft cockpit lounge along with a roomier swim platform and trunk storage. At the bow, all CCs include

a dual forward-facing sun lounge with center flip-down armrest with drink holders, and beautiful bow seating with power adjustable table is available on the 387 CCF, standard on the 387 CCS and both the 457 CCF and CCS.

Just aft of the helm, the impressive mid station brings a trove of innovations. The 457 offers either the CCF rigging station/wetbar with slide away bench, also standard on the 387s, or 457 CCS three-tiered cockpit galley. All feature a Corian countertop, molded sink and removable cutting board for bait rigging or refreshments. The Plano tackle box drawer reconfigures for organizing beverage items, plus three more drawers stow fishing or entertainment supplies. A large cooler with reFLEX decking powers out of the aft, keeping your beverages cold and providing extra seating or leg rests. The pull-out YETI® cooler or fridge to port plus the trash container and fire extinguisher/paper towel locker to starboard keep it all stowed yet at the ready. Sidewall and cockpit deck storage abounds.

The captain gets a standard electronics suite including dual Garmin or Raymarine widescreen color chartplotters, triple display available, with depth sounder, Mercury DTS w/7" SmartCraft® VesselView®, Mercury Joystick Piloting, Bennett trim tab system and a trove of upgrade configurations. Everyone will enjoy the Rockford Fosgate stereo with JL Audio speakers, along with ample dual USB-A/USB-C charging ports, wireless dash charging mounts and a high number of drink and rod/drink holders throughout. The 457s feature second row passenger bench seating or triple helm seats with three wireless charging mounts, offering a secure forward ride to more passengers.

Comfort is key in the Center Console cabin with generous headroom. Features include the CCS Ultrafabric or CCF Pro Series Sunbrella U-shaped lounge/double berth with dual-height wood table and filler cushion, LED/LCD HDTV, galley with Corian countertop, concealed sink, stainless pull-out fridge, microwave and 8,000 BTU AC. Aft is a molded private head compartment with vanity, Corian countertop, vessel sink, shower and Vacuflush head, while the 457 features a separate stall shower. Three cabin themes of Pro Series, Silver Mist and Beach Side bring a trove of interesting textures, and are timeless offerings that allow room for your designer eye to break the mold. Create your personalized setting, from bold to elegant, with a large fabric grouping of FormulaFlex selections to add color and pattern statements to your cabin. Ultrafabric or Sunbrella choices, cabinetry finishes plus many flooring options offer a broad scope in décor possibilities. FormulaFlex allows the enjoyable experience of designating pillow fabrics from beautifully coordinated collections. You'll celebrate in all the extra detailing of your chosen model.

Get out on the water and discover the lifestyle you are destined for – it's now easier than ever to personalize your Formula for your greatest adventure on the water!

THE 2024 FORMULA CC LINEUP – Make it Your Destiny!



FORMULA



PRESENTS THE 2024 LINE of best designed, best built pleasure boats on the water today. Celebrating 68 years of on-going advancement in marine manufacturing, Formula's tradition of excellence continues to surpass expectations with the ultimate goal of providing consistently gratifying experiences on the water with family and friends.



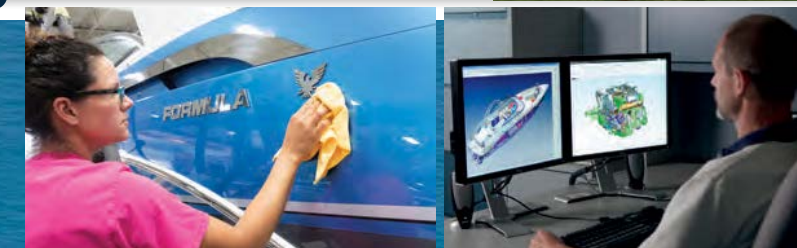
SINCE 1976, Formula has been 100% owned and managed by **THE PORTER FAMILY**, focused on continual product improvement throughout the line, from the smallest Bowrider to the superlative 500 SSC. Although he passed in 2021, Vic Porter leaves a lasting legacy of visionary design, superior execution, and most importantly, a satisfied and pleased customer. A dedicated team of employees do their best every day, combining premium materials with detailed fit and finish to achieve the extraordinary standard of quality required in a Formula.

AS LIFELONG BOATERS, the Porters realize the importance of responsive, customer-oriented service for owners, addressing issues through area dealerships, authorized service centers and the technical assistance team located at the manufacturing facility.



The FORMULA Difference

THE PORTERS invite you to join the ever-growing family of boaters who experience a reassuring difference with Formula. That difference is the result of fine-tuned design, authentic craftsmanship and a company-wide insistence on excellence. It means you'll enjoy more priceless moments with family and friends each time you boat. The Porter family wouldn't settle for less, and neither should you.



FORMULA QUALITY



- 575,000 square foot manufacturing facility built specifically for powerboat production
- Based in Decatur, Indiana, the Porters' home town
- Consistent procedures carried out with solid work-ethic dedication
- Utilizing the latest technology to its greatest advantage
- Corporate, sales and production all under one roof for ongoing collaboration in creating each boat



FORMULA'S EXCLUSIVE DESIGNERS – John Adams and Michael Young



- Responsible for each Formula's sleek lines and outstanding performance
- Achieved through an eminent blend of form and function
- Each unique design first becomes a 3D image, then a full scale reproduction and finally the master mold

FORMULAFLEX™ Offers Individual Personalization

- Graphic color choices are interchangeable to communicate your personal style
- Choose upholstery base, accent and piping colors to your individual preference
- Wide choice of cabin fabrics, Corian® surfaces and cabinetry make it uniquely yours
- Positioning of electronics can be further personalized
- FormulaFlex MyWay™ upgrades offer virtually unlimited graphic color selection, plus more cockpit, cabin and electronic choices



THE FORMULA DIFFERENCE – Best From Start to Finish



LAMINATION PROCEDURES Assure Durable Beauty

- Computer programmed cutting produces custom-ply, biaxial and triaxial fiberglass and Coremat® shapes
- Hand-laid composites and resin carefully layered with optimal cure time in thoroughly maintained molds
- High shear strength Corecell™ in hullsides
- Premium AME® 5001 resin in all hull layers – no barrier coat needed as with lower grade resins
- Every square inch at its strongest – no problem areas to patch with Kevlar strips

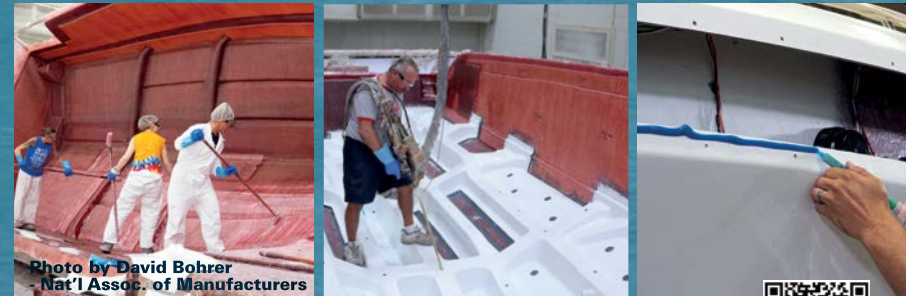
Superior STRUCTURAL REINFORCEMENT Assures Legendary Performance

- Unique, custom-engineered FAS³Tech matrix – a unitized fiberglass grid with premium AME® 5001 resin bonded to all CC hulls with Plexus® adhesive
- Stringers and matrix foam-filled for vibration dampening and solid ride
- Matrix includes integrated fish boxes and floor storage
- Additional structural reinforcement – custom fiberglass shapes, or pultrusions, along gunwales
- Deck and hull inseparable – chemical Plexus bond plus stainless steel bolts through heavy backing plates



FORMULA COCKPITS Lead in Versatility and Crowd Pleasing Comfort

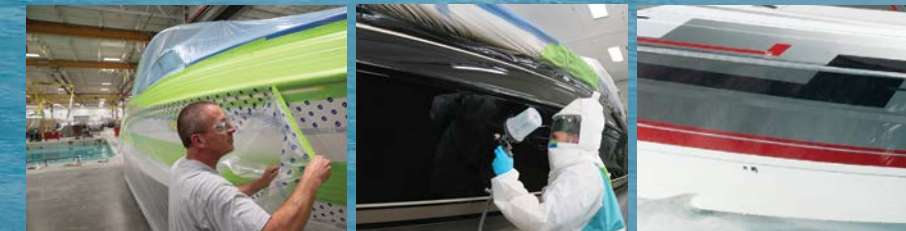
- Multi-purpose design innovations bring more fun on the water
- The ever-important flush cockpit for safety and ease
- Cockpit seating cleverly transforms for all-out performance runs or relaxing conversations in the round
- Triple adjustable bucket helm seating lets you share boating experiences together



Formula is Famous for PERFORMANCE EXCELLENCE



- Unique performance heritage with over 65 years of offshore boating experience
- Proven deep-V Formula hull configuration
- Exciting pace with responsive handling
- Solid, enjoyably smooth ride
- FAS³Tech® multi-plane hull technology for fast-paced, solid performance, increased range and soft re-entry
- Formula achieves high performance with confident control and solid, exhilarating ride



Vibrant, LONG LASTING FINISH Far Surpasses All Others

- Premium Ineos Maxguard™ LE gelcoat – the base on all Formulas
- Unique Axalta™ Cromax® XP basecoat/Imron® Elite clearcoat graphic process never chinks, fades or needs to be buffed back like the colored gelcoat others commonly use
- Multi-stage process creates brilliant metallic designs – impossible with gelcoat or Imron paint alone
- Stunning graphics with no accent tape striping applied
- Wide selection of color and design options – unlimited personalized color expression with FormulaFlex MyWay™ upgrade



Only the BEST COMPONENTS Make it Into a Formula

- Formula tests extensively for quality and endurance
- If a proposed item fails, it won't be in your Formula
- All railing is low-carbon 316L stainless steel – highest marine-grade available
- 316L stainless cleats installed with stainless lock nuts and backing plates
- Virtually all hardware is 316 stainless, far superior to merely electropolished, lower-grade stainless
- Hardware thru-bolted with chrome-plated stainless fasteners
- Inserting flexible O-rings ensures a water-tight seal



Formula ELECTRICAL SYSTEMS Keep You on the Water

- Connections individually hand-crimped and heat-sealed with double-wall shrink tubing using corrosion-resistant tinned wire
- Never using less reliable, pre-insulated connector common in the industry
- For longer runs, color-coded wiring neatly routed through flexible, protective conduit
- Easily reset E-TA® circuit breakers shield systems from excess current damage
- Heavy-duty marine-grade batteries installed for added reliability
- All boats equipped with dedicated starting batteries

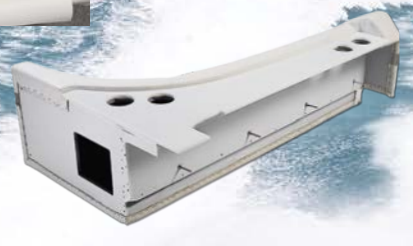
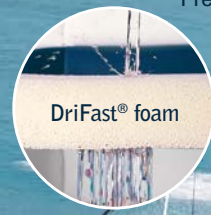


SUPERIOR SEATING with the highest quality construction

- Waterproof marine materials – no wood throughout cockpit
- Rotocast, Starboard® and StarLite® XL seat cores guarantee longevity
- Preshaped, contoured anti-microbial foam components
- Remarkable DriFast® foam does not retain water
- Computer-patterned and CNC cut shapes assembled into highly detailed forms by skilled sewers
- Rugged, outdoor-grade vinyl upholstery – higher density, tear-resistant with special backing
- 36-ounce White, Moondust and Morning Sand base vinyls treated with PreFixx to resist staining
- Accent vinyls color-permeated throughout
- High-grade Tenara® thread does not deteriorate from UV, cleaning agents or saltwater



Precision, double-needle stitching



Boating Satisfaction Makes All the DIFFERENCE



EVERYTHING YOU NEED For a Day of Fun



THE FORMULA CABIN – A Sumptuous Retreat

- Luxurious Ultrafabric lounges, beautifully finished cabinetry, upscale Corian® surfaces and table for a pleasing residential environment
- Décor selections feature fabrics that enhance each theme – even further personalization with FormulaFlex
- Pro Series Sunbrella indoor and outdoor fabrics
- Woodgrain-finish flooring and entry steps complement your selected cabin décor
- Wall and ceiling panels fit precisely – no tell-tale bead welt or screw cap covers to mask shortcut assembly



Luxurious ULTRAFABRIC LOUNGES

- Perfect setting for relaxation and entertainment
- Richly textured appearance and supple feel of fine leather
- Surprisingly tough and durable – spills wipe up easily

Genuine CORIAN COUNTERTOPS – Not an Imitator

- Advanced blend of natural materials and pure acrylic polymer
- Uniquely hand-crafted by Formula
- Remarkably durable, seamless surface
- Nonporous and easy to clean – stains do not penetrate

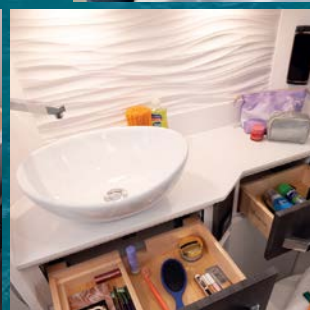
- The integrated wetbar, a Formula hallmark, features genuine Corian® counter, large sink, trash container and cooler or refrigerator for easy entertaining
- Highest number of polished stainless steel drink holders within easy reach
- Cabin door solidly secure with only one latch
- Smoothly finished fiberglass storage compartments stay open with gas spring or special friction hinge design
- Generous storage for all your gear, including dedicated storage for tables, filler cushions, shade poles and fenders

Formula's HELM STATION

- Triple-wide seating with options to sit, stand or rest on the upright seat
- Digital shifters/throttles and intuitive waterproof switches within easy reach
- Digital instrumentation and navigational electronics logically arrayed on sleek, liquid black dash panels
- Dual or triple Raymarine or Garmin chartplotters available
- Positioning of electronics can be further customized with FormulaFlex™
- Impressive leather-wrapped or Edson stainless steering wheel

FLAWLESS CABINETY – A Formula Standout Feature

- Solid, precision construction at its core
- CAD/CAM routers cut, drill and shape materials for exacting assembly and fit
- Cabinetry constructed with thru-bolted aluminum extrusions and stainless steel L-brackets
- Cabinet doors remain closed under way with perfect joinery and top quality locking latches
- Drawers are all premium dovetailed hardwood maple construction



Formula ENGINE ROOMS Offer Reassuring Safeguards

- Meticulous hose routing and wiring secured in flexible conduit
- Standard fume detector and automatic fire extinguishing system
- Available automatic outboard flushing system
- Outboard engines securely mounted through sturdy composite transom



Formula's TECHNICAL ASSISTANCE GROUP Offers Vital Support

- Quick, accurate advice to dealers helps resolve service issues
- Timely updates to dealers on product changes and service programs

FORMULA SERVICE Keeps Owners on the Water Through a Qualified Network

- Formula dealers offer expert full service along with new and pre-owned sales
- 130+ service-only dealers, Authorized Service Centers, provide multiple quality alternatives for most areas
- Find all locations on the Formula website

Formula Consistently Earns the Coveted MARINE INDUSTRY CSI AWARD

- Evaluation program impartially administered by the marine industry, not from company questionnaires
- Earned awards in Fiberglass Outboard Boats and Sterndrive Bowrider Boats
- Important customer satisfaction achievement – check other boat companies for their industry ratings



The Formula Team Goal is OWNER SATISFACTION



- Formula is National Marine Manufacturers Association Certified, using American Boat and Yacht Council standards



Each Formula Must Pass EXTENSIVE TESTING

- All boat instruments and systems fully engaged and evaluated in a test tank
- Engines are powered up and run through diagnostics while in gear
- Continuous water spray confirms seals around deck hatches, hardware and along windshield
- New hull designs, engine packages, materials and equipment evaluated through testing on open water
- Formula's quality program assigns a team of inspectors to examine each finished boat as if they were the buyer – reinforces the importance of consistent, premium quality throughout the entire facility
- New owners enjoy The Formula Difference from day one

FORMULA GUARD Coverage on Every Model



- Protects each Formula owner's investment
- 10-year structural warranty
- 5-year limited protection plans on all components, accessories, engines and outdrives
- Free Monthly Reliability Inspections for first year of ownership
- 24/7/365 factory hotline for emergency assistance
- 5-year SeaTow Gold Card membership
- 5-year warranty includes labor and replacement materials plus allowances for travel, haul out and towing
- All warranties and memberships fully transferable to subsequent owners
- High value remains strong to trade up

THE FORMULA DIFFERENCE

IT'S IN THE SLEEK DESIGN, THE SOLID DEPENDABILITY, THE SMOOTH, FAST RIDE, AND MOST IMPORTANT OF ALL, THE BOATING SATISFACTION WITH FAMILY AND FRIENDS THAT YOU EXPERIENCE OVER AND OVER AGAIN.

And that makes all the DIFFERENCE in the world!



**Sky Blue
Flagship Graphic A**
w/Black and Neptune Accents
Pro Series Cockpit with White Vinyl Seating

387 CCF



387 Center Console Fish Specifications

LOA to Transom	38'7"	11.76 m
LOA	41'2"	12.55 m
LOA Trailered/OB Triple	41'6" / 43'10"	12.65 m / 13.36 m
LOA Trailered/OB Dual	42'8" / 44'7"	13.00 m / 13.59 m
Maximum Beam	12'0"	3.66 m
Approximate Weight	22,500 lbs	10,206 kg
Cabin Headroom	6'4"	1.93 m
Fuel Capacity	500 gal	1,893 L
Water Capacity	55 gal	208 L
Holding Tank Capacity	25 gal	95 L
Live Well Capacity	80 gal (2 - 40)	303 L
Fish Box Capacity	180 gal (2 - 90)	681 L
Bridge Clearance w/Mast		
Light Down/Radar/Light Up	9'9" / 10'8" / 12'4"	2.97 / 3.25 / 3.76 m
Draft	46"	1.17 m
Deadrise	23°	23°



387 CCF



Pro Series Gray
Décor Package
Open-Grain Sunbleached Gray Cabinetry with
Sparkling Granita Corian® Granite Sunbrella Fabric
and Tungsten Oak Flooring



formulaboats.com





**Dark Charcoal to Silver Diamond Metallic
Flagship Graphic D**
w/Deep Red and Black Accents
*Moondust Cockpit with Embossed Accents,
Charcoal Accent Striping and Deep Red Piping*

387 CCS



387 Center Console Sport Specifications

LOA to Transom	38'7"	11.76 m
LOA	41'2"	12.55 m
LOA Trailered/OB Triple	41'6" / 43'10"	12.65 m / 13.36 m
LOA Trailered/OB Dual	42'8" / 44'7"	13.00 m / 13.59 m
Maximum Beam	12'0"	3.66 m
Approximate Weight	22,500 lbs	10,206 kg
Cabin Headroom	6'4"	1.93 m
Fuel Capacity	350 gal	1,324 L
Water Capacity	55 gal	208 L
Holding Tank Capacity	25 gal	95 L
Bridge Clearance w/Mast		
Light Down/Radar/Light Up	9'9" / 10'8" / 12'4"	2.97 / 3.25 / 3.76 m
Draft	46"	1.17 m
Deadrise	23°	23°



formulaboats.com

10

11



387 CCS



Moonlight Bay "Flex"
Décor Package
Open-Grain Raven Wood Cabinetry with
Silverite Corian®, Koala Ultrafabric
and Gray Wash Flooring



formulaboats.com

12

13



Steel Metallic to
Silver Diamond Metallic
Flagship Fusion Graphic B
w/Atlantic Blue and Silver Diamond Accents
Moondust Cockpit with Atlantic Blue Accent Striping
and Steel Piping

457 CCS



457 Center Console Sport Specifications

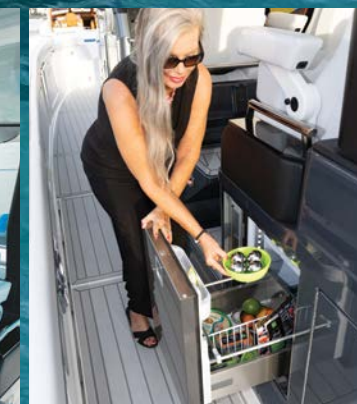
LOA to Transom	45'7"	13.89 m
LOA	49'1"	14.96 m
LOA OB Triple/Trailer	49'8"/52'0"	15.15/15.85 m
Maximum Beam	13'9"	4.19 m
Approximate Weight	35,200 lbs	15,966 kg
Cabin Headroom	6'6"	1.98 m
Fuel Capacity	700 gal	2,649 L
Diesel Capacity - generator	35 gal	132 L
Water Capacity	90 gal	340 L
Holding Tank Capacity	35 gal	132 L
Bridge Clearance		
w/mast light down/radar/light up	10'2"/11'5"/13'0"	3.10/3.48/3.96 m
Draft	54"	1.37 m
Deadrise	22°	22°



formulaboats.com

14

15





457 CCF

**Dolphin Gray
Flagship Graphic A**
w/Neptune Blue and Tempest Gray Metallic Accents
Moondust Cockpit with Bayport Blue Accent Striping
and Storm Gray Piping



457 Center Console Fish Specifications

LOA to Transom	45'7"	13.89 m
LOA	49'1"	14.96 m
LOA OB Triple/Trailered	49'8"/52'0"	15.15/15.85 m
Maximum Beam	13'9"	4.19 m
Approximate Weight	35,200 lbs	15,966 kg
Cabin Headroom	6'6"	1.98 m
Fuel Capacity	700 gal	2,649 L
Diesel Capacity - generator	35 gal	132 L
Water Capacity	90 gal	340 L
Holding Tank Capacity	35 gal	132 L
Live Well Capacity	116 gal (2-58)	440 L (2-220L)
Fish Box Capacity	280 gal (2-140)	1,059 L (2-529.5 L)
Bridge Clearance		
w/mast light down/radar/light up	10'2"/11'5"/13'0"	3.10/3.48/3.96 m
Upper Station Bridge Clearance		
w/mast down/mast up	16'2"/24'9"	4.93/7.59 m
Draft	54"	1.37 m
Deadrise	22°	22°



formulaboats.com





Silver Mist
Décor Package
 Open-Grain Raven Wood Cabinetry with
 Venaro White Corian®, Hammerhead Ultrafabric
 and Gray Wash Flooring



18



19



Cabin Décor SELECTIONS

Formula's décor selections complement exterior color choices with designer expertise. All new Silver Mist and Beach Side cabin themes join the Pro Series décor, giving you room for your designer eye to break the mold. With FormulaFlex™, a wide selection of additional fabric choices allows you to transform your cabin to your personal style. Ultrafabric choices and open-grain cabinetry finishes plus many flooring options offer a broad scope in décor possibilities.



Formula GRAPHIC SELECTIONS

Formula graphics are created using a multi-stage process applying premium Axalta™ Cromax® XP Basecoat and Imron® Elite clearcoat, keeping your graphic vivid, bright and beautiful year after year. Only Formula's signature process creates brilliantly deep Metallic graphics, impossible with gelcoat or Imron paint alone. A wide variety of color/graphic combinations includes

Standard, Flagship and Fusion designs. And, only at Formula can you express your personal taste with FormulaFlex by selecting the exterior graphic you like with any combination of more than 30 basecoat colors. FormulaFlex MyWay™ offers virtually endless possibilities, matching any of the 2,534 solid colors in the Pantone Matching System® or any of the thousands of colors from the major worldwide automotive manufacturers. With all these choices, your Formula is sure to be spectacular!

Graphic COLOR SELECTIONS



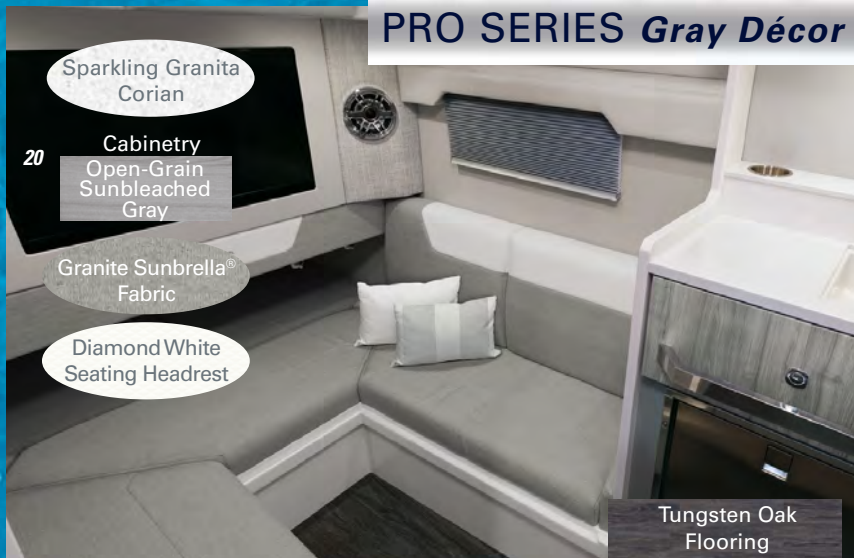
SILVER MIST Décor



BEACH SIDE Décor



PRO SERIES Gray Décor



PRO SERIES Tan Décor

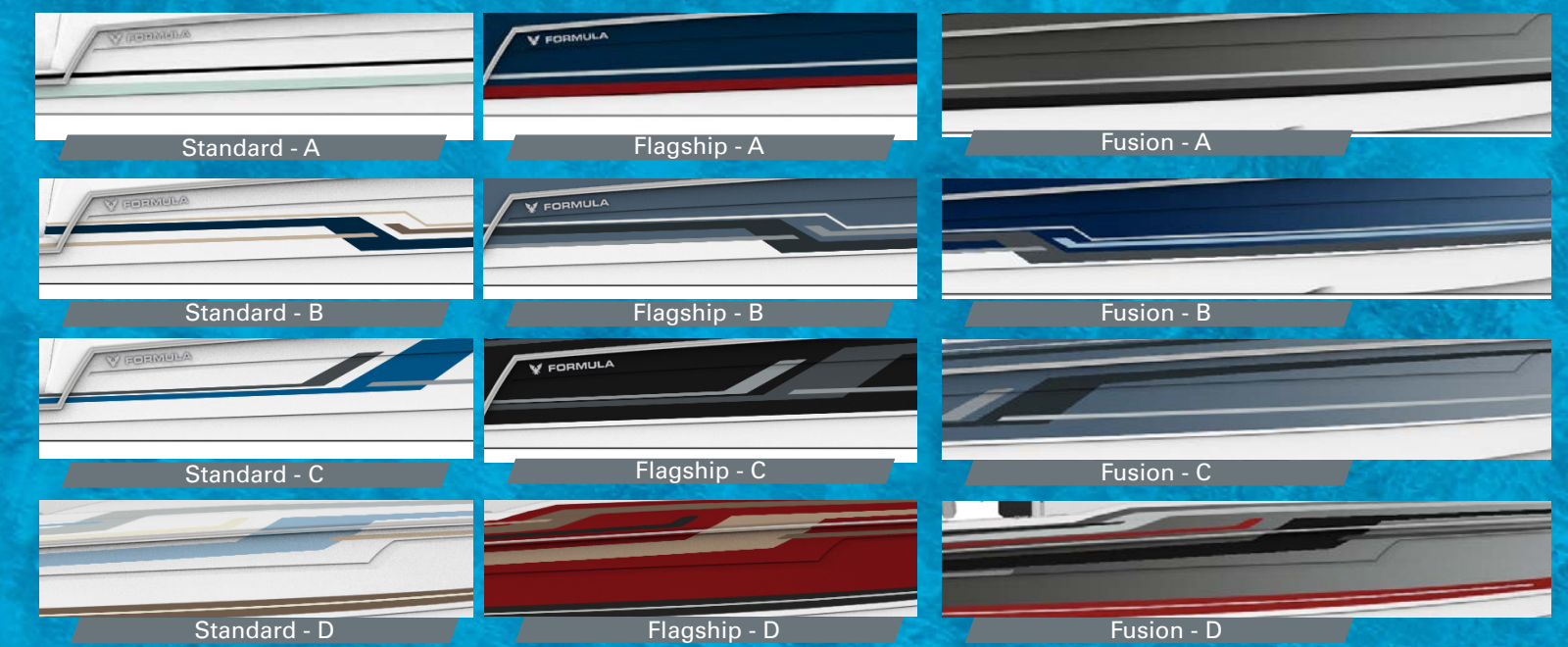


Graphic DESIGN SELECTIONS



Design Your Formula!

FormulaBoats.com/graphics-configurator



*Formula's Exclusive Designers recommend these choices

Formula Website & Social Media

Formula's website and social media pages are continually updated with new articles, pictures and news. Check out the latest Formula blog site, video page, dealer and owner events, boat care articles, Owners Resources and Formula's company history. Order a catalog, visit the feedback/e-mail section with comments or suggestions and sign up for our monthly Formula E-News to keep on track with up-to-date information. Look for Formula online at: formulaboats.com, www.formulagear.com and www.facebook.com/formulaboats. Click on these sites to see the newest and best of Formula!

Build Your FORMULA

Formula's unique program, "Build Your Formula," makes the exciting process of choosing your Formula options and graphics much easier. Scan the QR code to "Build Your Formula" at formulaboats.com.



Formula's website and social media pages are continually updated with new articles, pictures and news. Check out the latest Formula blog site, video page, dealer and owner events, boat care articles, Owners Resources and Formula's company history. Order a catalog, visit the feedback/e-mail section with comments or suggestions and sign up for our monthly Formula E-News to keep on track with up-to-date information. Look for Formula online at: formulaboats.com, www.formulagear.com and www.facebook.com/formulaboats. Click on these sites to see the newest and best of Formula!



Formula Gear

Formula Gear and Accessories offer the latest top-quality items featuring the impressive Formula logo. If you like up-to-date colors and styling, visit your Formula dealer or order online at the Formula Gear website, www.formulagear.com.



Canvas Covers

Formula custom-fitted canvas features color coordinated, non-fading Sunbrella® acrylic fabric w/SeaMark® vinyl undercoating. Canvas packages include weather-resistant YKK® zippers.



Formula Lineup

The Formula powerboat lineup includes Crossover, Bowrider, Sun Sport and Center Console models. The Bowrider/Sun Sport series ranges from 24 to 35 feet, while the popular Crossover lineup ranges from 33 to 50 feet. The 387 CCF and CCS debuted last year, and the 457 debuted in 2024! To receive a free catalog, call 1.800.736.7685 or scan the QR code or visit formulaboats.com to locate your nearest Formula dealer!

